



Office/Medical Space for Lease

Over 30,630 vehicles pass your business daily!
30180 Orchard Lake Road • Farmington Hills, MI



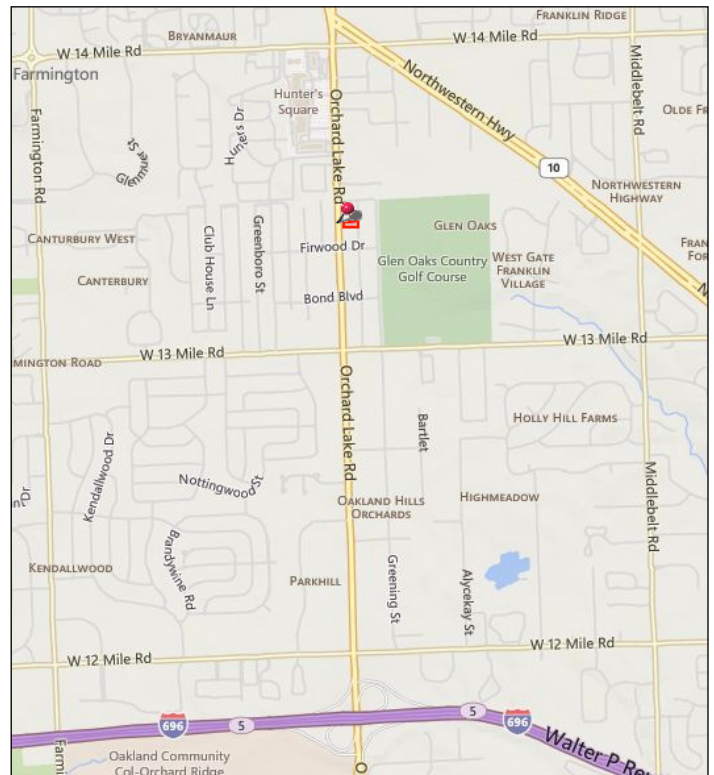
Hills Office Park

*The perfect location
for medical or other
professional services.*

**Up to 5,000 square feet
of space available.**

Will build out to suit.

Monument and
Building Signage
Available.



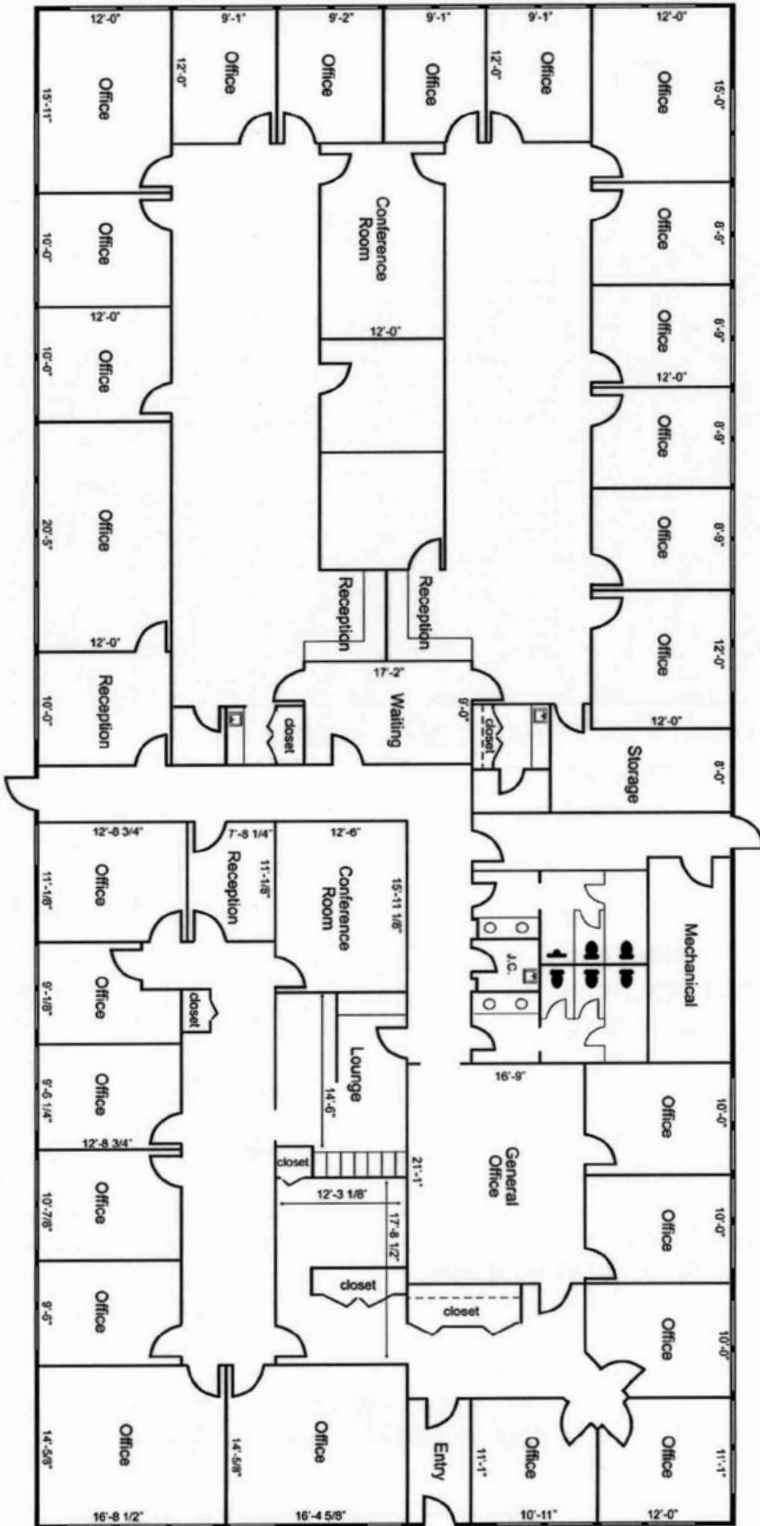
Steuer & Associates, Inc. • 30180 Orchard Lake Road, Suite 150 • Farmington Hills, MI 48334
For more information, contact David Steuer at 248.626.8890, ext. 216 or david@myfavehome.com
www.myfavplace.com





Office/Medical Space for Lease

Over 30,630 vehicles pass your business daily!
30180 Orchard Lake Road • Farmington Hills, MI



All dimensions are approximate - not field verified.

Property Name Hills Office Park
 Building Class B
 Rental Rate \$13.95/sq. ft.
 plus G & E
 Available Square Feet up to 5,000
 Year Built 1983 (Retrofit 2011)
 Number of Floors 1
 Total Parking Ample/Surface
 Average Traffic Flow Per Day:
 14,790 Southbound
 15,840 Northbound

Source: SEMCOG, 2012 count.

Will build out to suit.

Convenient access for visitors.
 Doorside parking.

Monument and Building Signage
 Available.

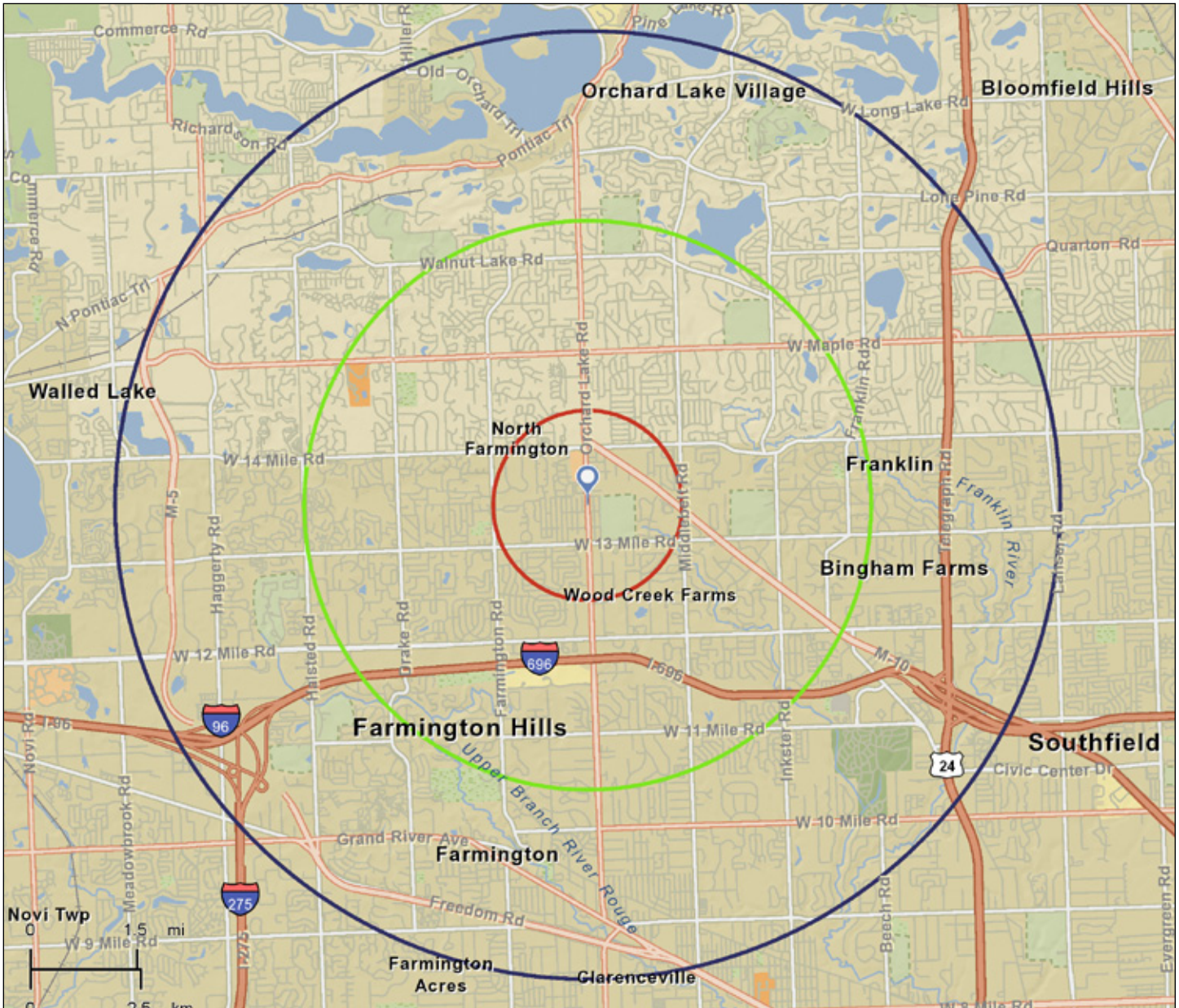
**Call 248.626.8890 for
 more information!**

Steuer & Associates, Inc. • 30180 Orchard Lake Road, Suite 150 • Farmington Hills, MI 48334
 For more information, contact David Steuer at 248.626.8890, ext. 216 or david@myfavehome.com
www.myfavplace.com



Office/Medical Space for Lease

Over 30,630 vehicles pass your business daily!
30180 Orchard Lake Road • Farmington Hills, MI



1 Mile Radius
Population: 7,860
Households: 3,586

3 Mile Radius
Population: 63,164
Households: 24,959

5 Mile Radius
Population: 165,002
Households: 69,229

Source: U.S. Census Bureau, 2010. ESRI® forecasts for 2013.

