

Call or Text  
Linda Desmond  
248.705.7334

# Palmer Townhomes

## Midtown Detroit / Art Center District

### New Construction



### ***Townhome Features:***

- 3 bedroom / 3 bathroom and 4 bedroom / 4 bathroom floor plans.
- 2-car attached garage.
- Space on driveway for two additional cars.
- Granite counter tops, stainless appliances.
- 9-foot ceilings in the great room and kitchen.
- In-home full-size washer and dryer.
- Deck.

**You can be the first to live in the final phase  
of this attractive and well-maintained community!**

***From \$1,995 / month (as little as \$665 average per bedroom)***

***Multi-year leases are available. Also available for purchase.***

Located on East Palmer Street, between Brush Street and John R Street.  
Addresses: 269 - 299 East Palmer Street, Detroit, MI 48202

Palmer Art Center North, LLC • Built and Leased by Steuer & Associates, Inc.  
Call or Text Linda Desmond at 248.705.7334 • Email [linda@steuergroup.com](mailto:linda@steuergroup.com)  
[www.myfavehome.com](http://www.myfavehome.com) • [www.palmertownhomes.com](http://www.palmertownhomes.com)  
*All information is subject to change without notice or obligation.*

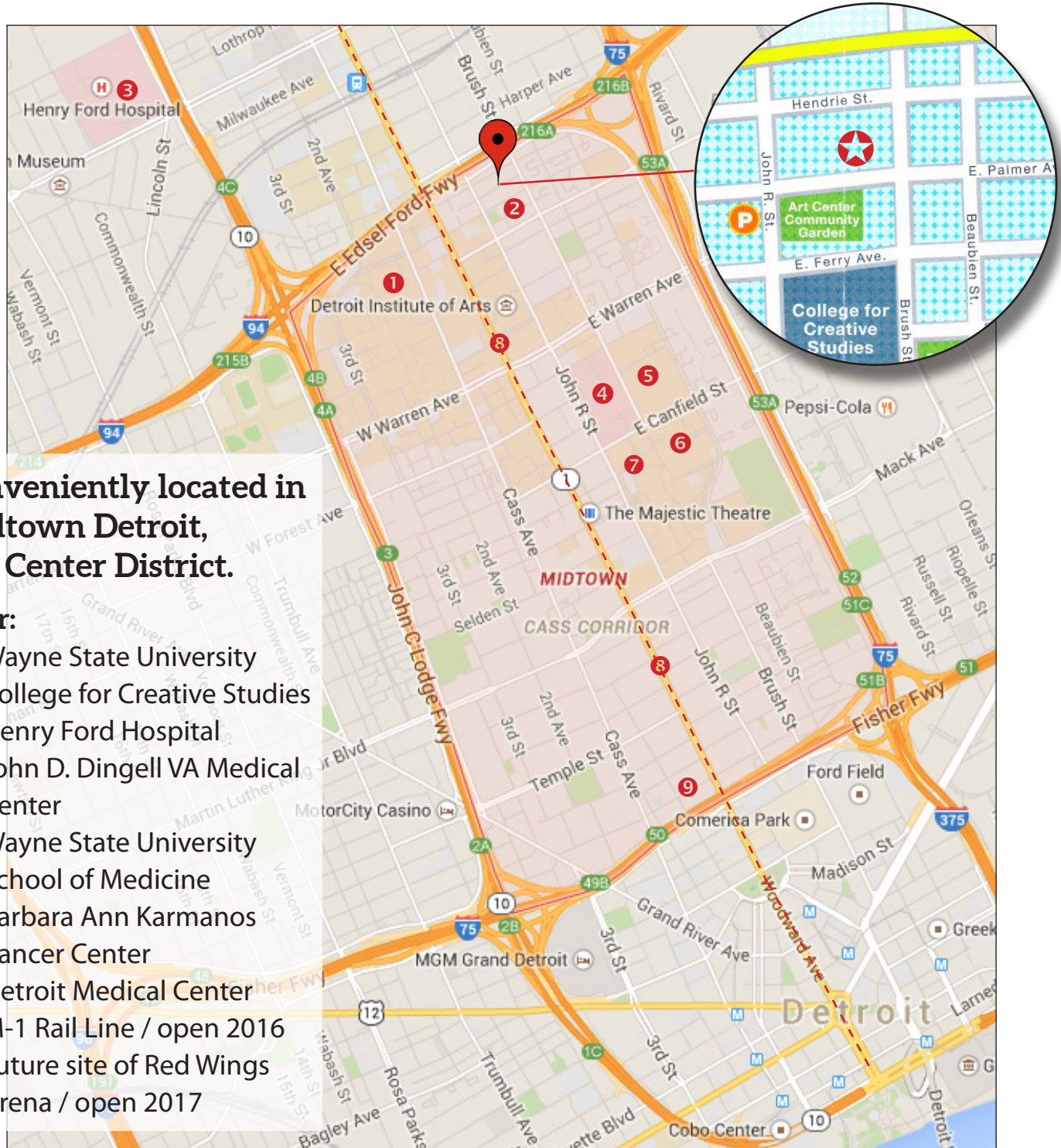


Call or Text  
Linda Desmond  
248.705.7334

# Palmer Townhomes

## Midtown Detroit / Art Center District

### New Construction



**Conveniently located in  
Midtown Detroit,  
Art Center District.**

**Near:**

- 1 Wayne State University
- 2 College for Creative Studies
- 3 Henry Ford Hospital
- 4 John D. Dingell VA Medical Center
- 5 Wayne State University School of Medicine
- 6 Barbara Ann Karmanos Cancer Center
- 7 Detroit Medical Center
- 8 M-1 Rail Line / open 2016
- 9 Future site of Red Wings Arena / open 2017

Palmer Art Center North, LLC • Built and Leased by Steuer & Associates, Inc.  
Call or Text Linda Desmond at 248.705.7334 • Email [linda@steuergroup.com](mailto:linda@steuergroup.com)  
[www.myfavehome.com](http://www.myfavehome.com) • [www.palmer-townhomes.com](http://www.palmer-townhomes.com)  
*All information is subject to change without notice or obligation.*





Call or Text  
Linda Desmond  
248.705.7334

# Palmer Townhomes

## Midtown Detroit / Art Center District

### New Construction

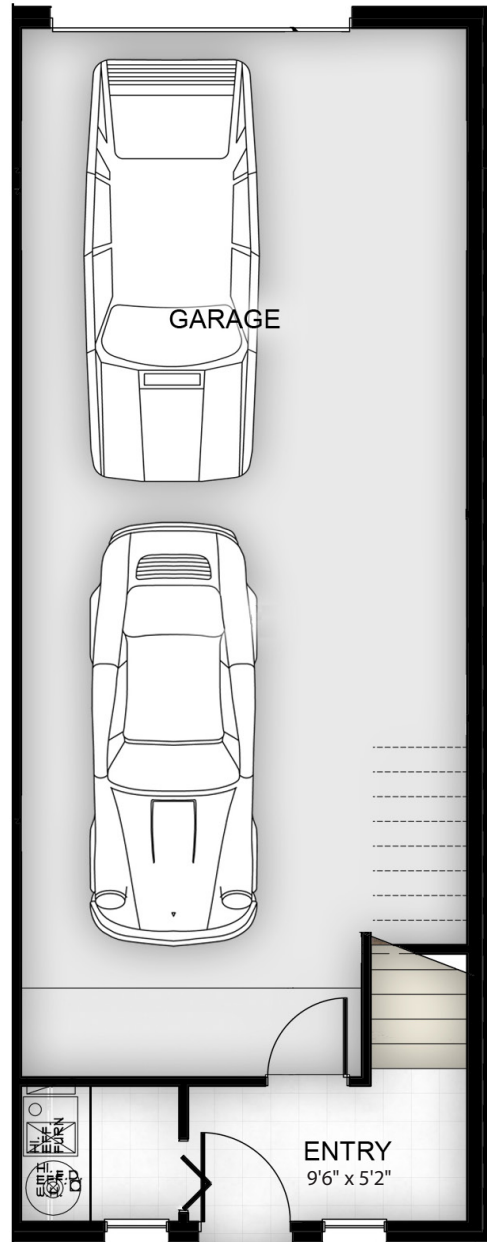
*Unfurnished Residences. Furniture shown only for dimensioning purposes. All dimensions are approximate.*

### 3 Bedroom Floor Plan

Approx. 1,458 sq. ft.

For Lease from \$1,995 / month

As little as \$665 / bedroom



LOWER LEVEL  
3 Bedroom Floor Plan

Palmer Art Center North, LLC • Built and Leased by Steuer & Associates, Inc.  
Call or Text Linda Desmond at 248.705.7334 • Email [linda@steuergroup.com](mailto:linda@steuergroup.com)  
[www.myfavehome.com](http://www.myfavehome.com) • [www.palmertownhomes.com](http://www.palmertownhomes.com)  
*All information is subject to change without notice or obligation.*



Call or Text  
Linda Desmond  
248.705.7334

# Palmer Townhomes

## Midtown Detroit / Art Center District

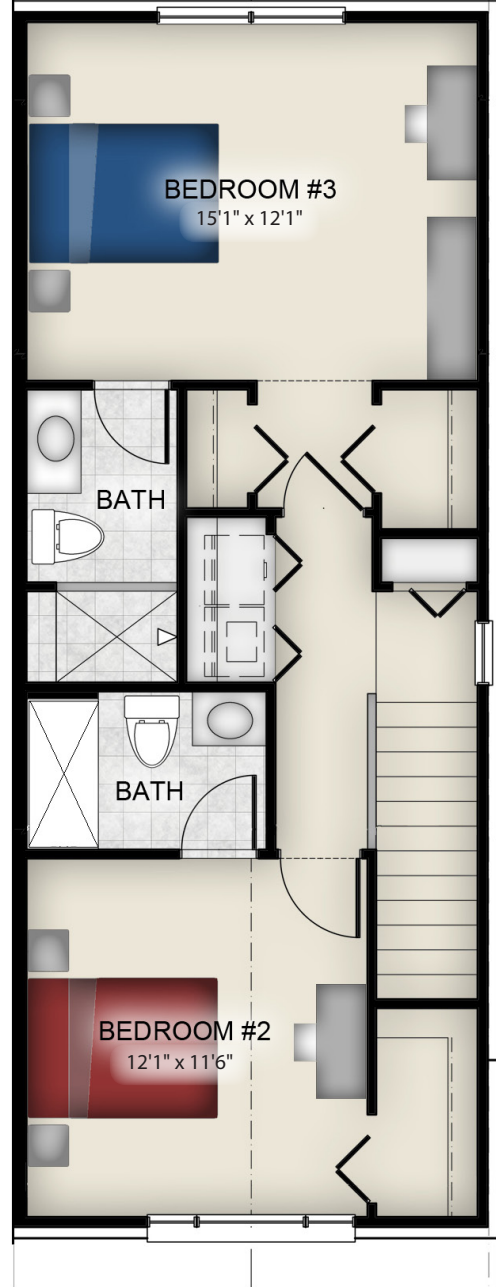
### New Construction

*Unfurnished Residences. Furniture shown only for dimensioning purposes. All dimensions are approximate.*



**FIRST LEVEL**  
3 Bedroom Floor Plan

**9-foot Ceilings  
in the  
Kitchen / Dining  
and Living Room!**



**SECOND LEVEL**  
3 Bedroom Floor Plan

Palmer Art Center North, LLC • Built and Leased by Steuer & Associates, Inc.  
Call or Text Linda Desmond at 248.705.7334 • Email [linda@steuergroup.com](mailto:linda@steuergroup.com)  
[www.myfavehome.com](http://www.myfavehome.com) • [www.palmertownhomes.com](http://www.palmertownhomes.com)  
*All information is subject to change without notice or obligation.*



Call or Text  
Linda Desmond  
248.705.7334

# Palmer Townhomes

## Midtown Detroit / Art Center District

### New Construction

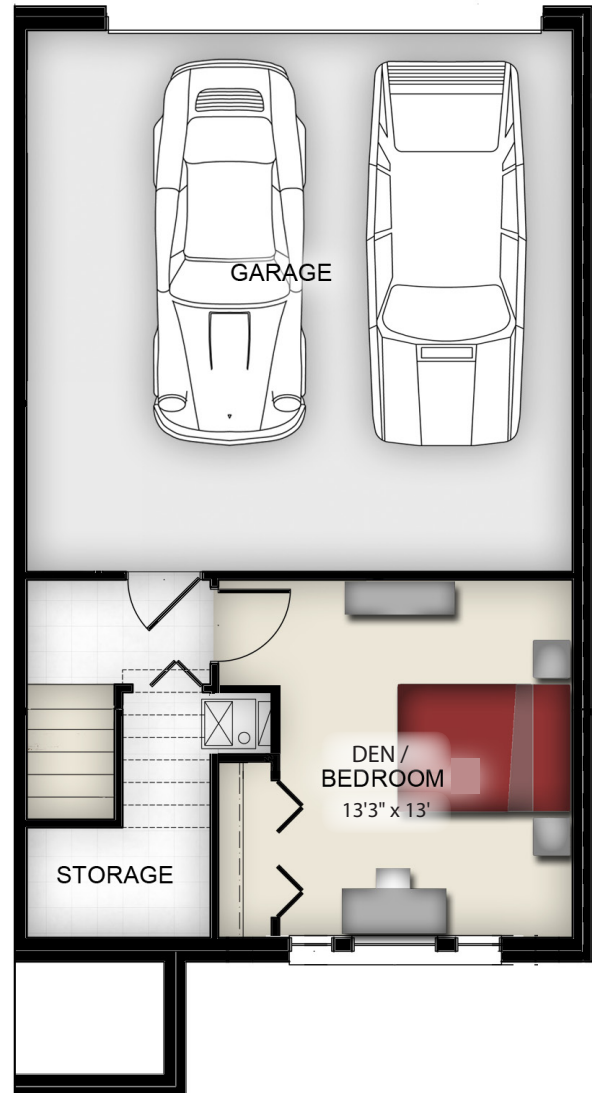
*Unfurnished Residences. Furniture shown only for dimensioning purposes. All dimensions are approximate.*

### 4 Bedroom plus lower level Den/Bedroom Floor Plan

Approx. 2,223 sq. ft.

For Lease from \$2,795 / month

As little as \$699 / bedroom



LOWER LEVEL  
4+ Bedroom Floor Plan

Palmer Art Center North, LLC • Built and Leased by Steuer & Associates, Inc.  
Call or Text Linda Desmond at 248.705.7334 • Email [linda@steuergroup.com](mailto:linda@steuergroup.com)  
[www.myfavehome.com](http://www.myfavehome.com) • [www.palmer-townhomes.com](http://www.palmer-townhomes.com)  
*All information is subject to change without notice or obligation.*



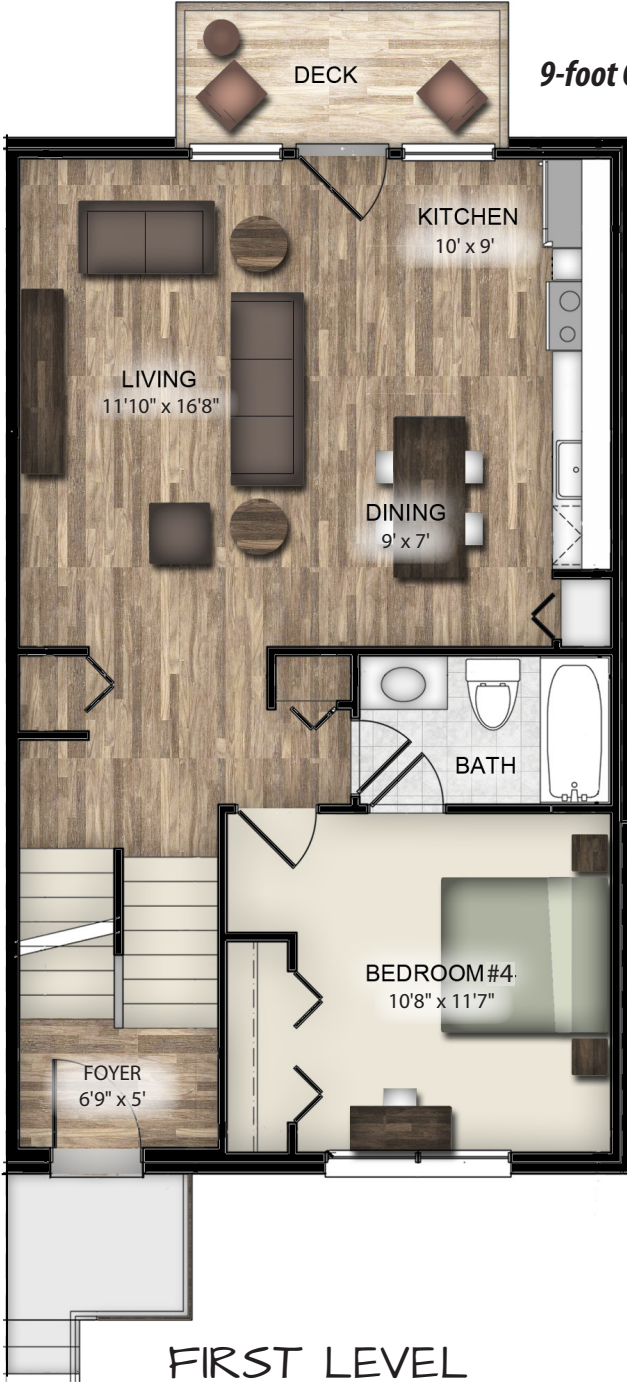
Call or Text  
Linda Desmond  
248.705.7334

# Palmer Townhomes

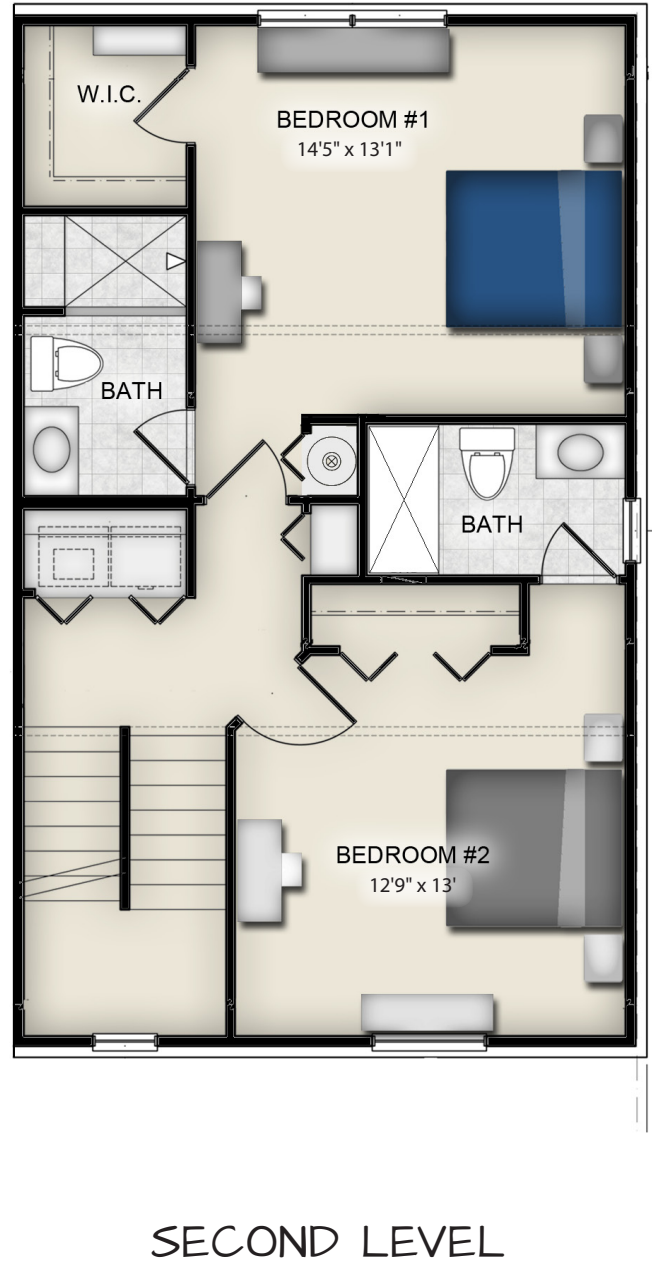
## Midtown Detroit / Art Center District

### New Construction

*Unfurnished Residences. Furniture shown only for dimensioning purposes. All dimensions are approximate.*



**9-foot Ceilings in the Kitchen, Dining and Living Rooms!**



Palmer Art Center North, LLC • Built and Leased by Steuer & Associates, Inc.  
Call or Text Linda Desmond at 248.705.7334 • Email [linda@steuergroup.com](mailto:linda@steuergroup.com)  
[www.myfavehome.com](http://www.myfavehome.com) • [www.palmer-townhomes.com](http://www.palmer-townhomes.com)  
*All information is subject to change without notice or obligation.*



Call or Text  
Linda Desmond  
248.705.7334

# Palmer Townhomes

## Midtown Detroit / Art Center District

### New Construction

*Unfurnished Residences. Furniture shown only for dimensioning purposes. All dimensions are approximate.*



THIRD LEVEL  
4+ Bedroom Floor Plan

Palmer Art Center North, LLC • Built and Leased by Steuer & Associates, Inc.  
Call or Text Linda Desmond at 248.705.7334 • Email [linda@steuergroup.com](mailto:linda@steuergroup.com)  
[www.myfavehome.com](http://www.myfavehome.com) • [www.palmertownhomes.com](http://www.palmertownhomes.com)  
*All information is subject to change without notice or obligation.*

