

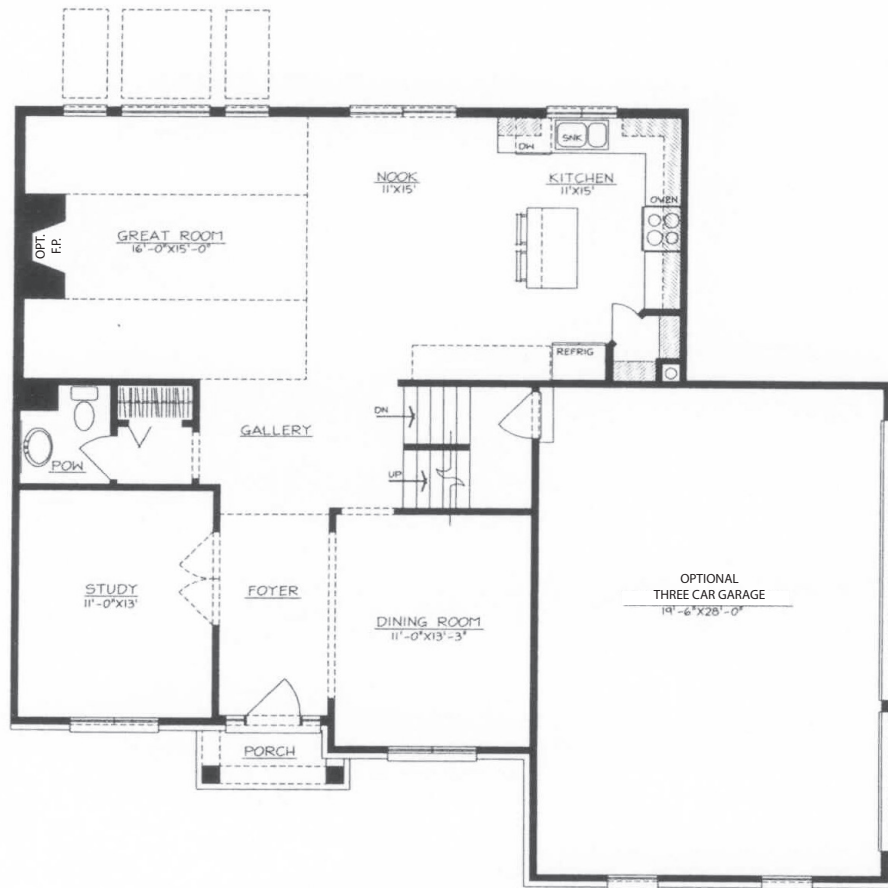


Desmond III Floor Plan

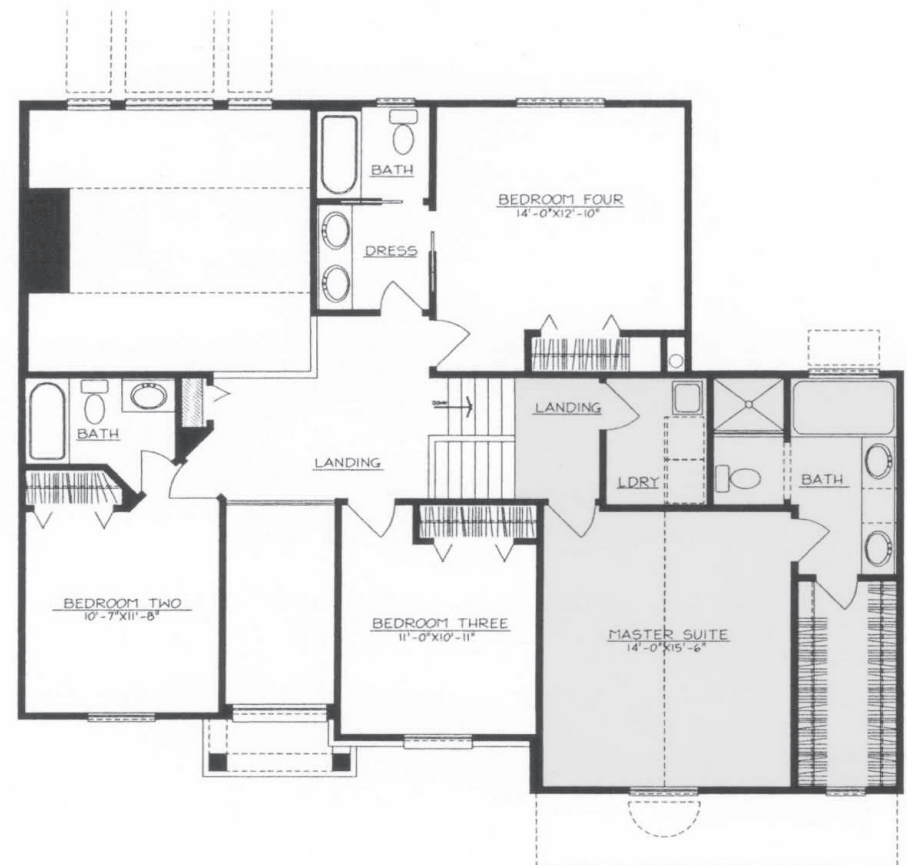
Approx. 2545/SF

Steuer & Associates, Inc. • 30180 Orchard Lake Road, Suite 150 • Farmington Hills, MI 48334
For more information, contact Sales at 248.285.9200 • sales@steuergroup.com

Mid-Level Master/Owner's Suite (Shaded Area)



MAIN LEVEL FLOOR PLAN



UPPER LEVEL FLOOR PLAN

© Steuer & Associates, Inc. All dimensions are approximate and may vary in construction.

www.myfavhome.com

