



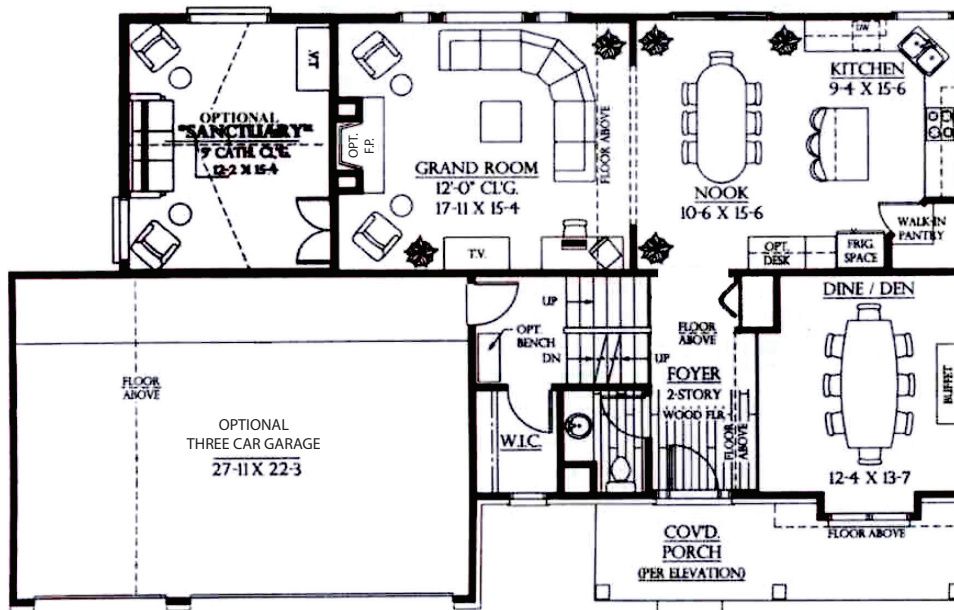
Bayfield Floor Plan

Approx. 2334 /SF

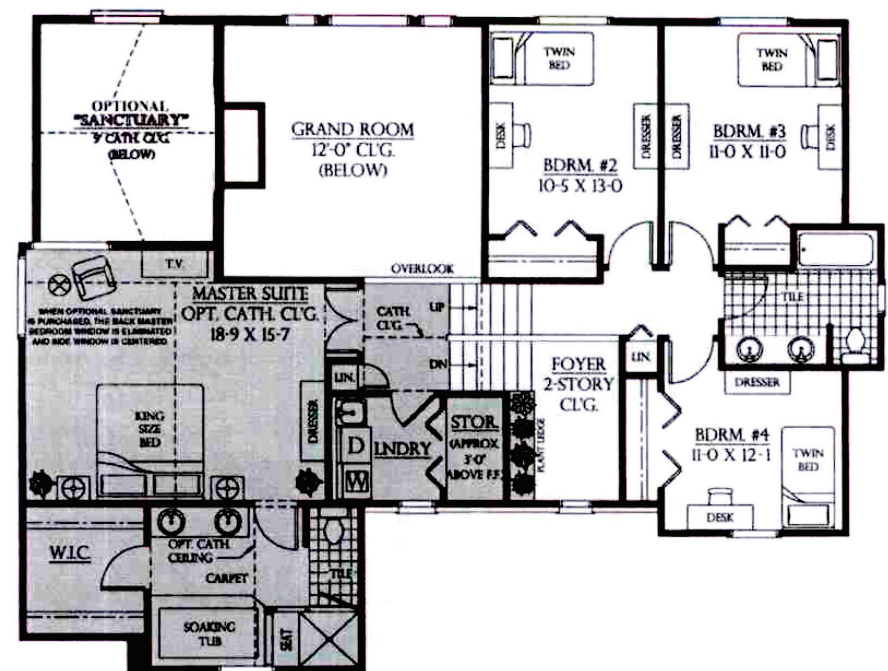
Steuer & Associates, Inc. • 30180 Orchard Lake Road, Suite 150 • Farmington Hills, MI 48334
For more information, contact **Sales** at **248.285-9200** • sales@steuergroup.com

Mid-Level Master/Owner's Suite (Shaded Area)

Optional Sanctuary (Approx. 2542/SF including this Option)



MAIN LEVEL FLOOR PLAN



MASTER SUITE & UPPER LEVEL FLOOR PLAN

© Steuer & Associates, Inc. All dimensions are approximate and may vary in construction.

www.myfavhome.com

