

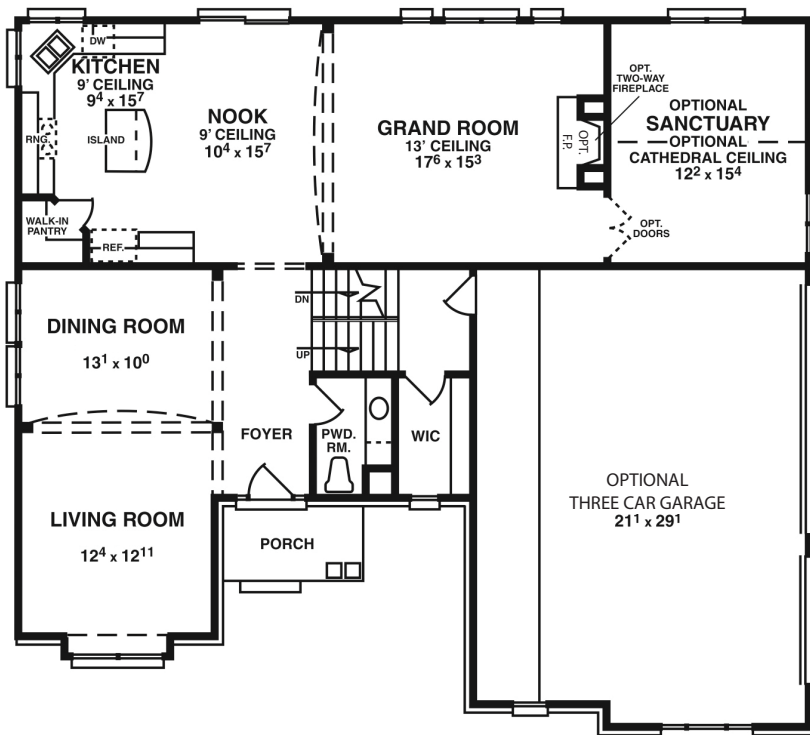


Bayfield Expanded Floor Plan

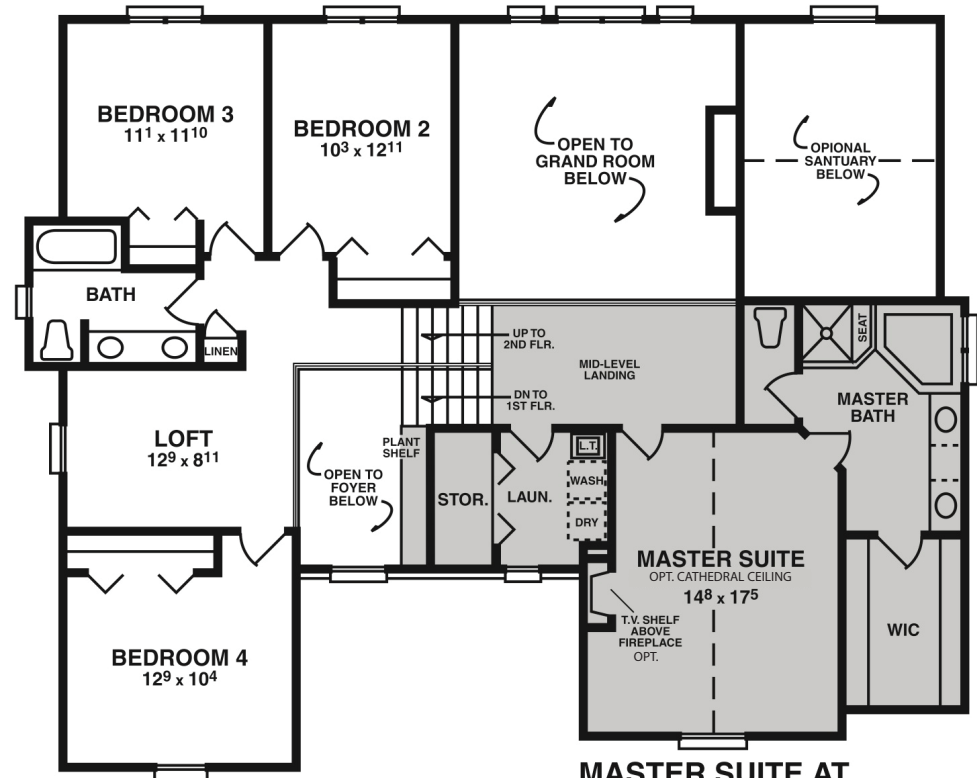
Approx. 2616/SF

Steuer & Associates, Inc. • 30180 Orchard Lake Road, Suite 150 • Farmington Hills, MI 48334
 For more information, contact Sales at 248.285-9200 • sales@steuergroup.com

Mid-Level Master/Owner's Suite (Shaded Area)
 Optional Sanctuary (Approx. 2800/SF w/ this Option)



MAIN LEVEL FLOOR PLAN



MASTER SUITE & UPPER LEVEL FLOOR PLAN

